



■ Tools and materials: Scissors, glue, ruler, a used ball-point pen

■ Notation Key: ..... Mountain fold

- - - - - Valley fold

— Scissors line

— Cut in line

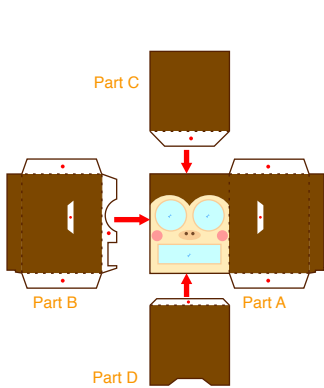
● Glue spot

✂ Cut out

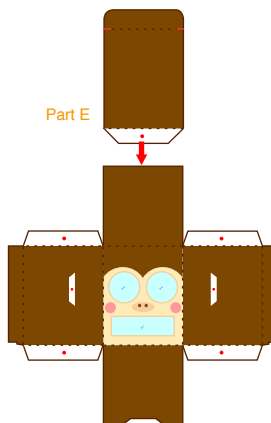
■ Assembly tip: Trace along the folds with a ruler and a used pen (no ink) to get a sharper, easier fold.

⚠ Caution: Glue, scissors and other tools may be dangerous to young children so be sure to keep them out of the reach of young children.

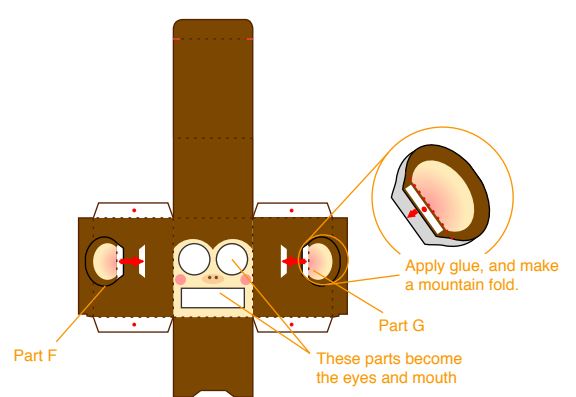
## Assembly Instructions



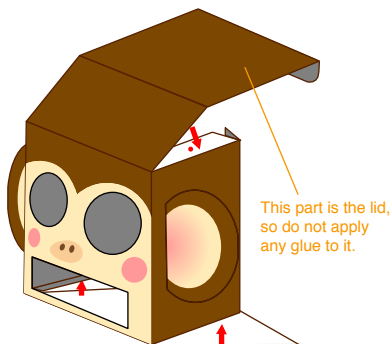
1. Attach parts B, C, and D to part A.



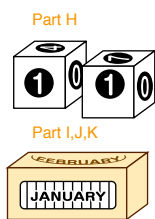
2. Glue part E together.



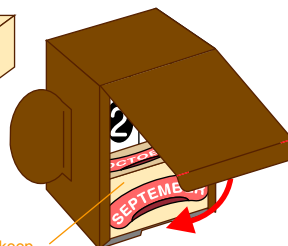
3. Glue parts F and G together.  
Cut out the eyes and mouth at this point too.



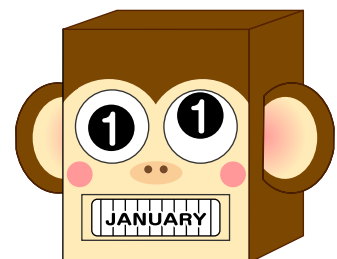
4. Assemble the box and glue it together.



You can also keep other parts inside when not in use.

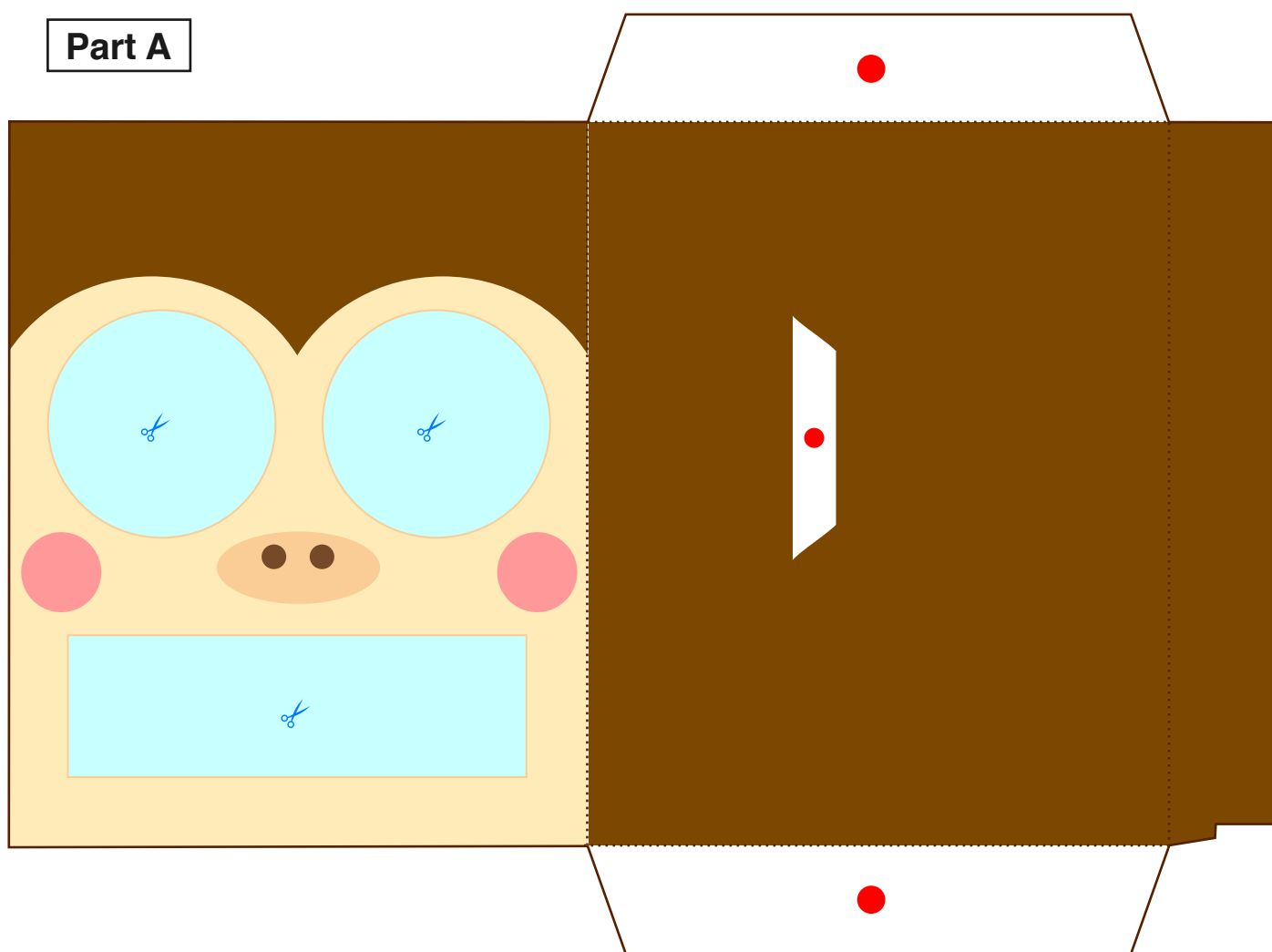


5. Assemble the month and date pieces, and put them inside the box.

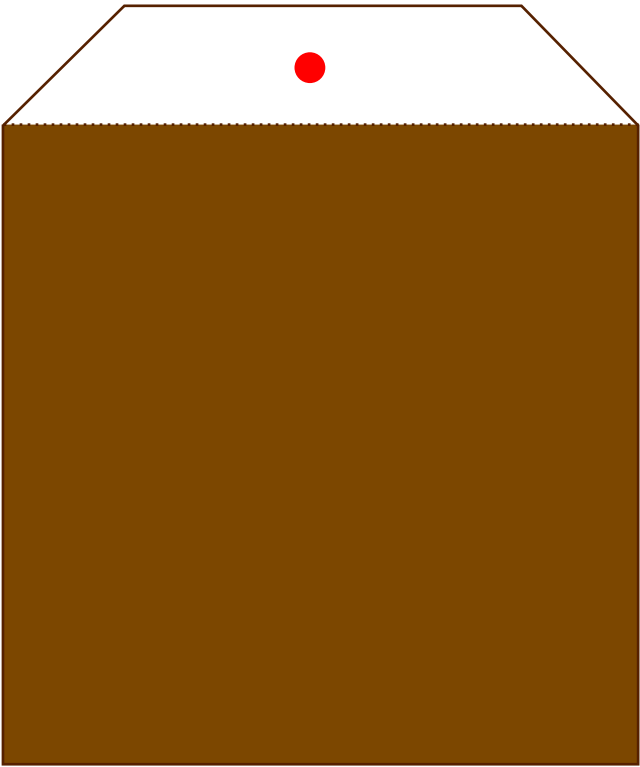
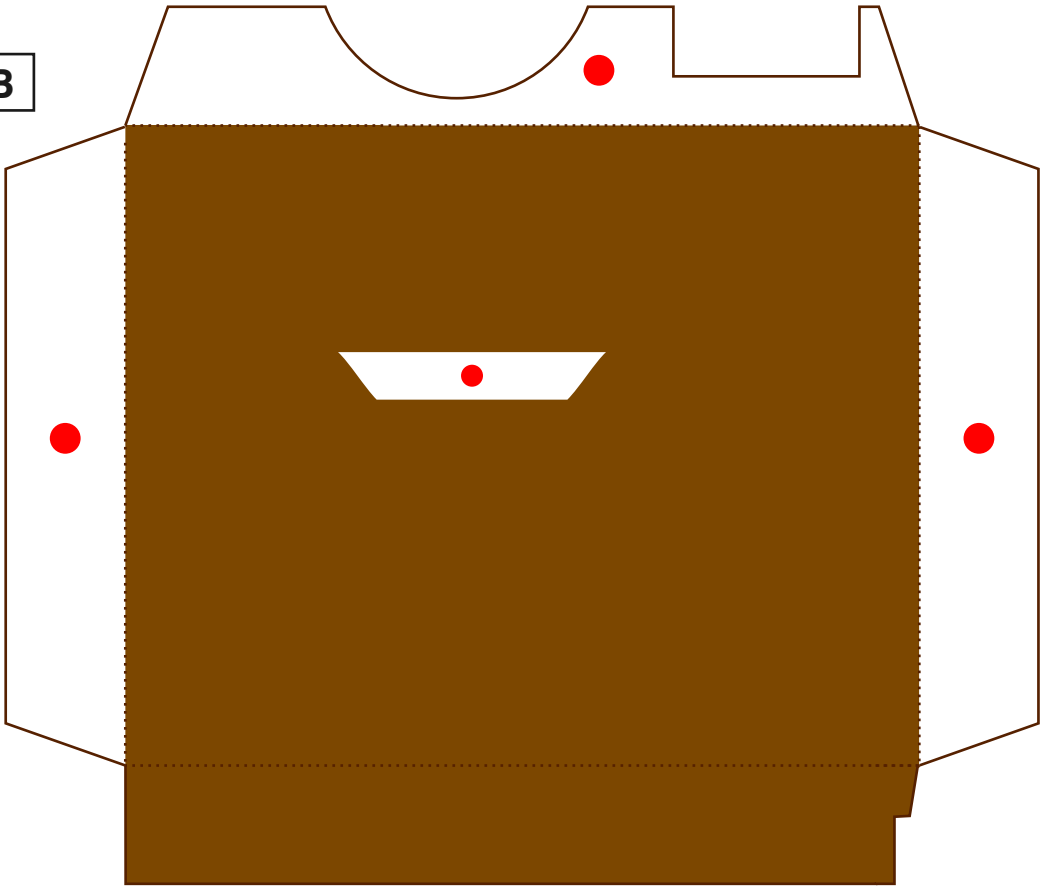


6. Finished!

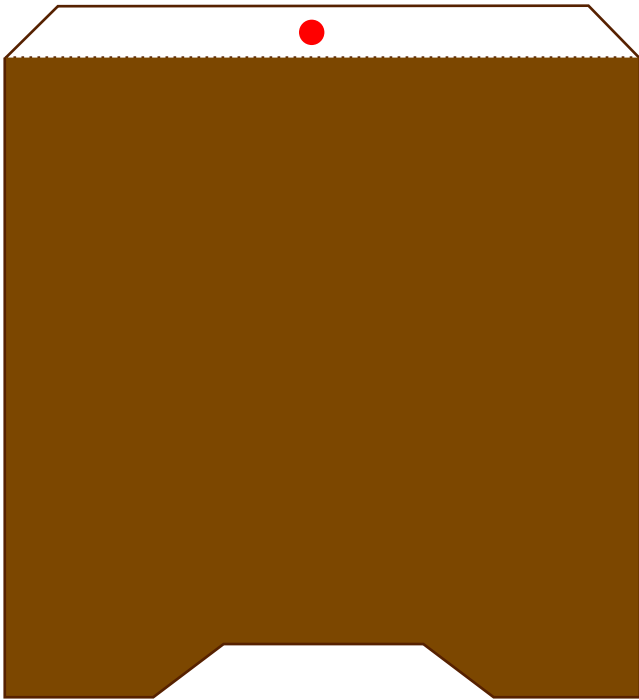
Part A



Part B



Part C

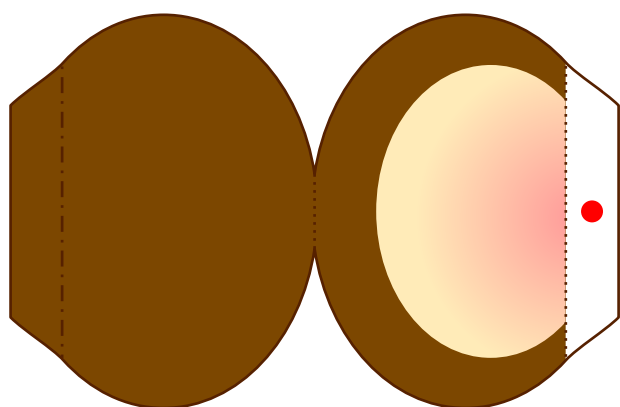


Part D

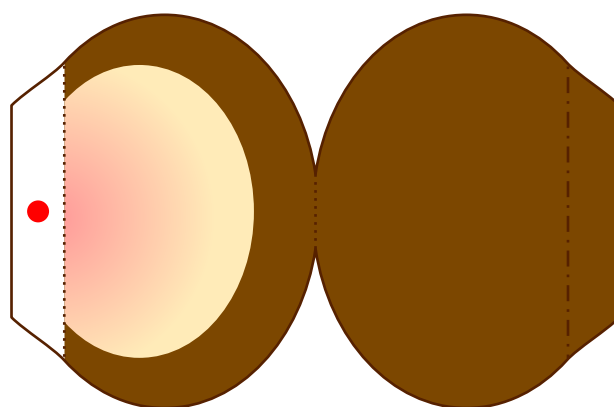
Part E



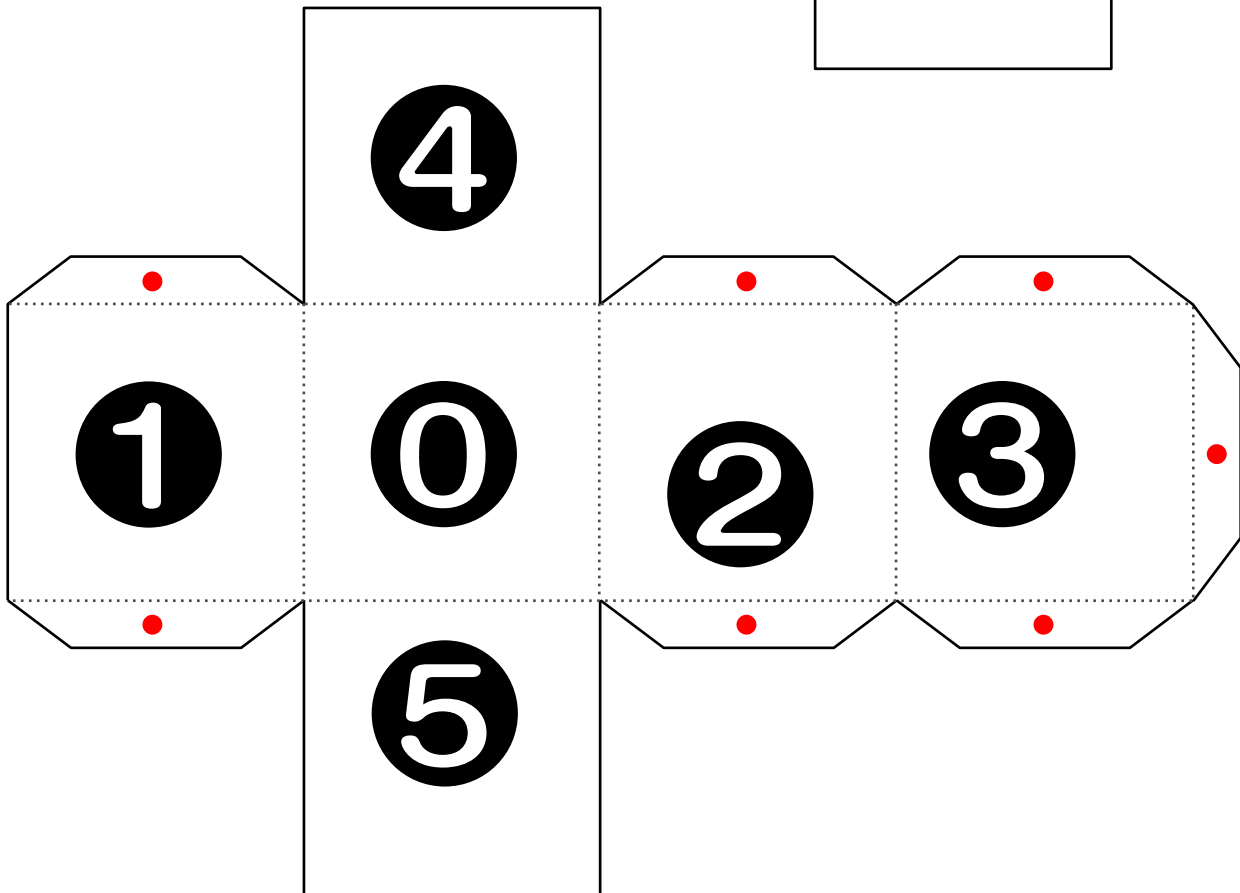
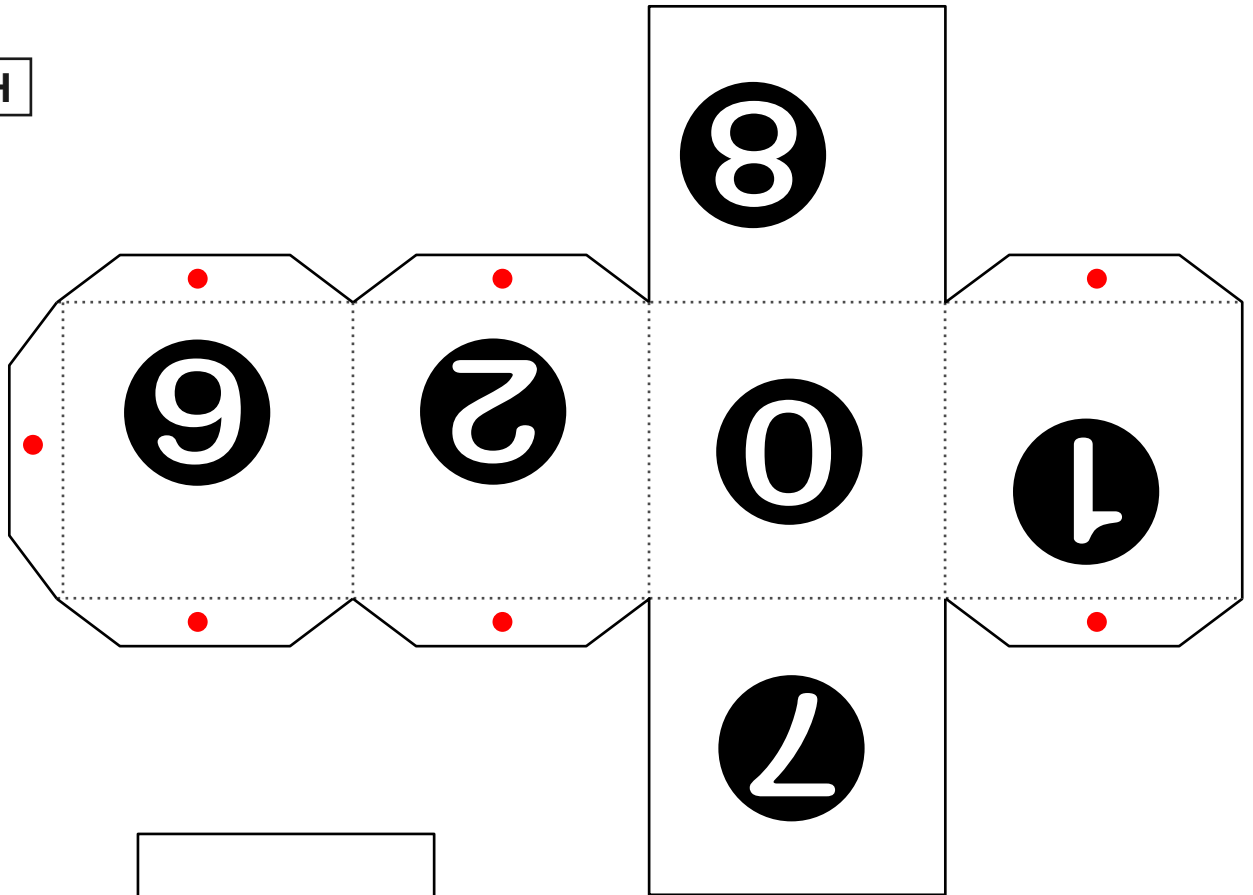
Part F



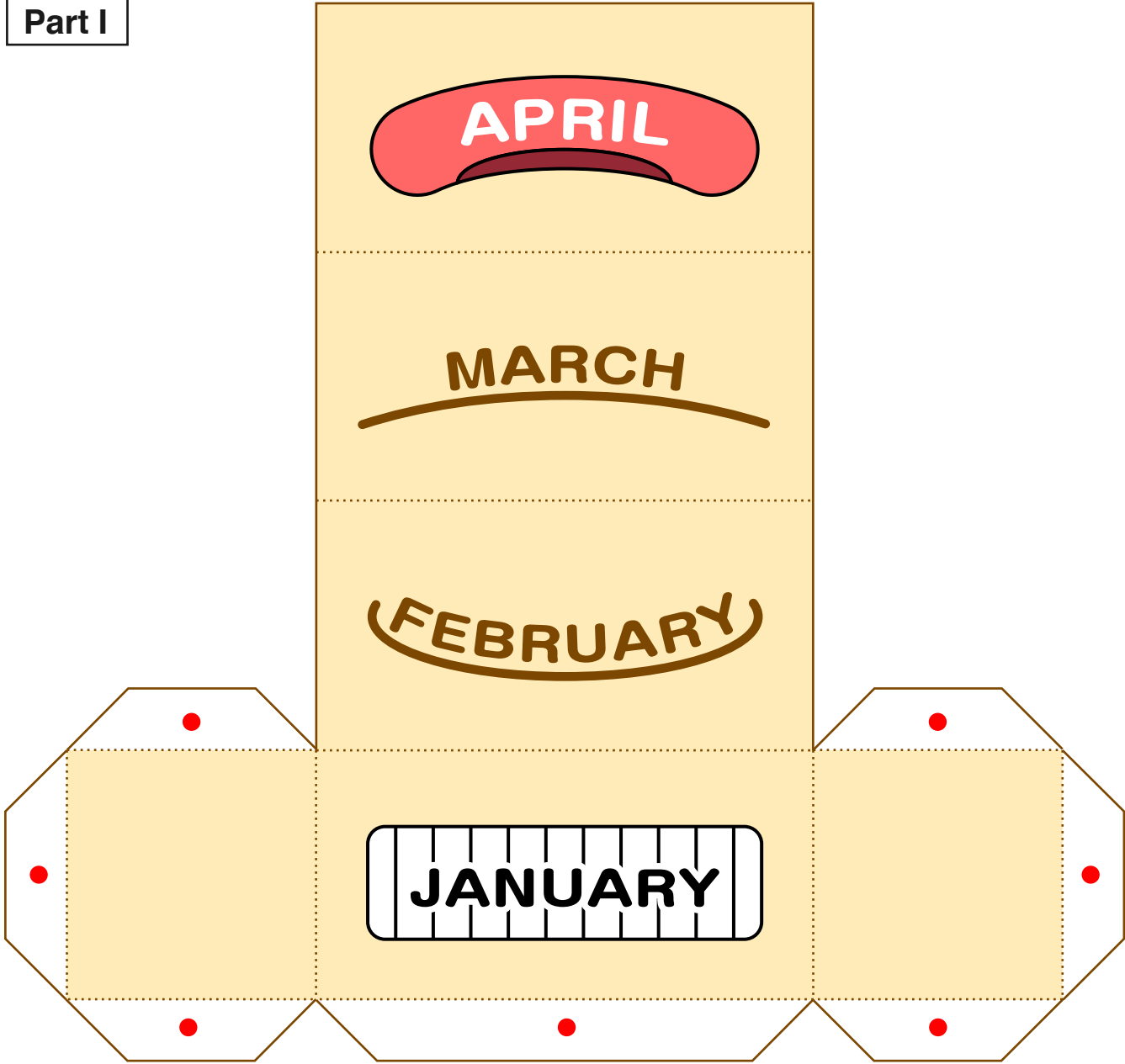
Part G



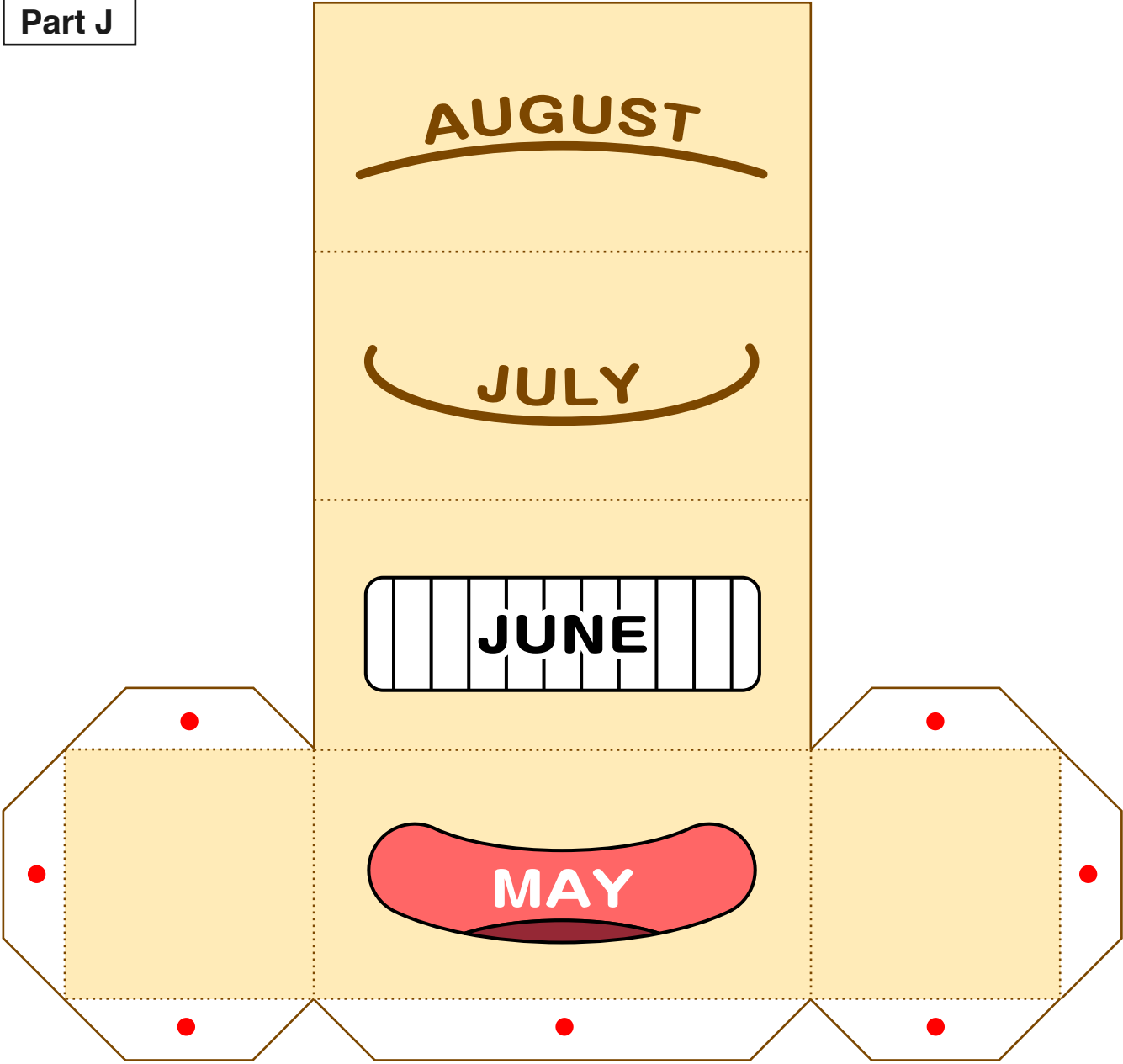
Part H



Part I



Part J



Part K

